

SAILS						
NAME	WIND M.P.H.	WEIGHT	FOOT	LUFF	AREA SQ. FT.	REMARKS
MAIN SAIL		5.8	SEE	SAIL PLAN	86	ROLLER REEFING, CUNNINGHAM ZIPPER FOOT ZIPPER
STORM TRYSAIL		7.0	11'-0"	16'-0"	86	SHEETS, ROPE TACK PENNANT
10' STORM JIB		7.0	10'-3"	23'-6"	99	2'-6" HEAD PENNANT, 1'-9" TACK PENNANT
15' JIB		7.0	15'-6"	33'-0"	230	13'-9" HEAD PENNANT
20' JIB		7.0	20'-0"	40'-0"	376	6'-9" HEAD PENNANT
23' HEAVY GENOA		5.5	23'-6"	45'-0"	500	STRETCHY LUFF, CUNNINGHAM HOLE TACKING CRINGLE
24' MEDIUM GENOA		4.7	24'-7"	46'-9"	547	STRETCHY LUFF, CUNNINGHAM HOLE TACKING CRINGLE. (150% LP)
24' LIGHT GENOA		3.0	24'-7"	46'-9"	547	NO HANKS, TACKING CRINGLE (150% LP)
27' DRIFTER/REACHER		2.2	26'-9"	46'-9"	547	LEECH & FOOT LINE, WIRE LUFF (150% LP)
SPANKER/STORM SPINN.		1.5 N				
REGULAR SPINNAKER		1.5 N				MAX RULE
LIGHT SPINNAKER		0.75 N				MAX RULE
FLOATER SPINNAKER		0.5 N				
TALL CUT STAY SAIL		2.2	8'-6"	40'-6"	167	ADJUSTABLE LUFF, TACK PENNANTS, SHEETS

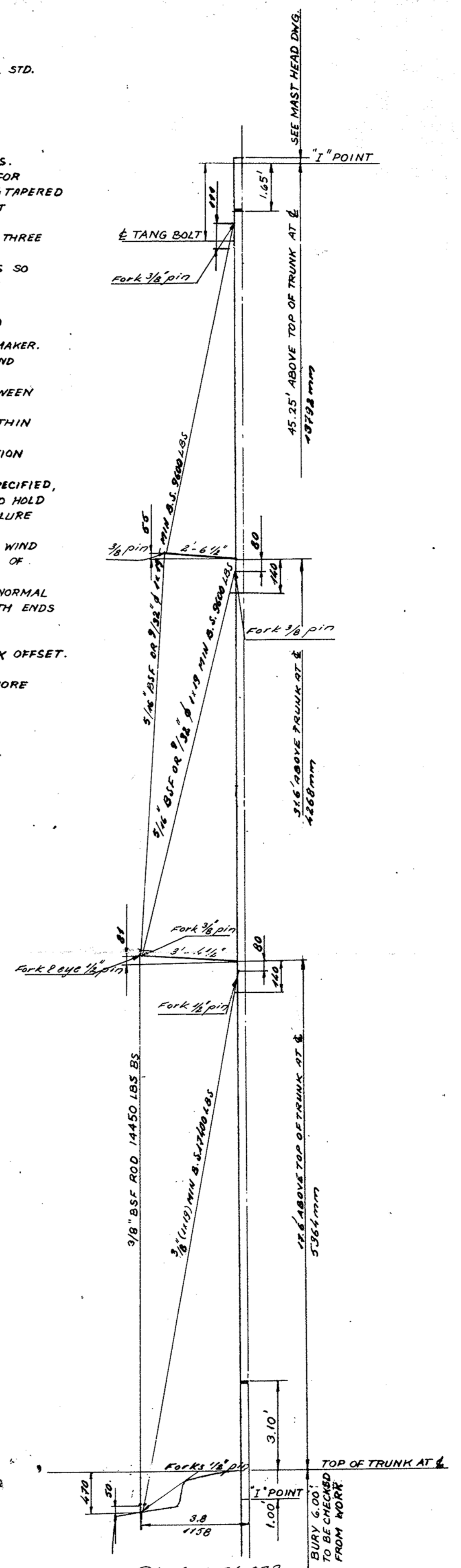
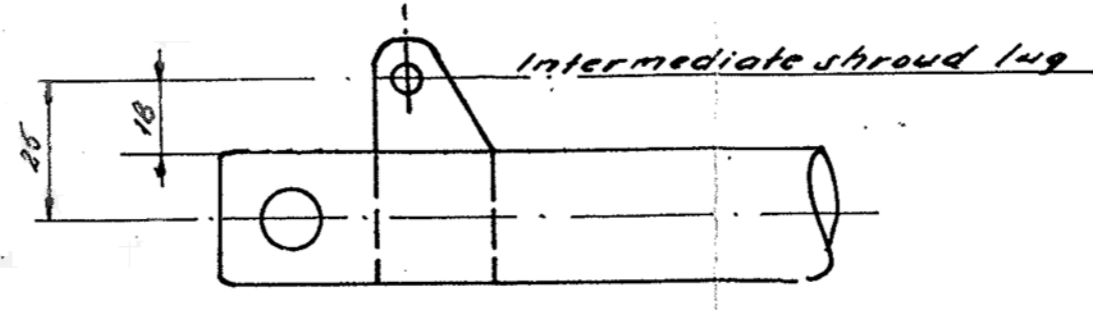
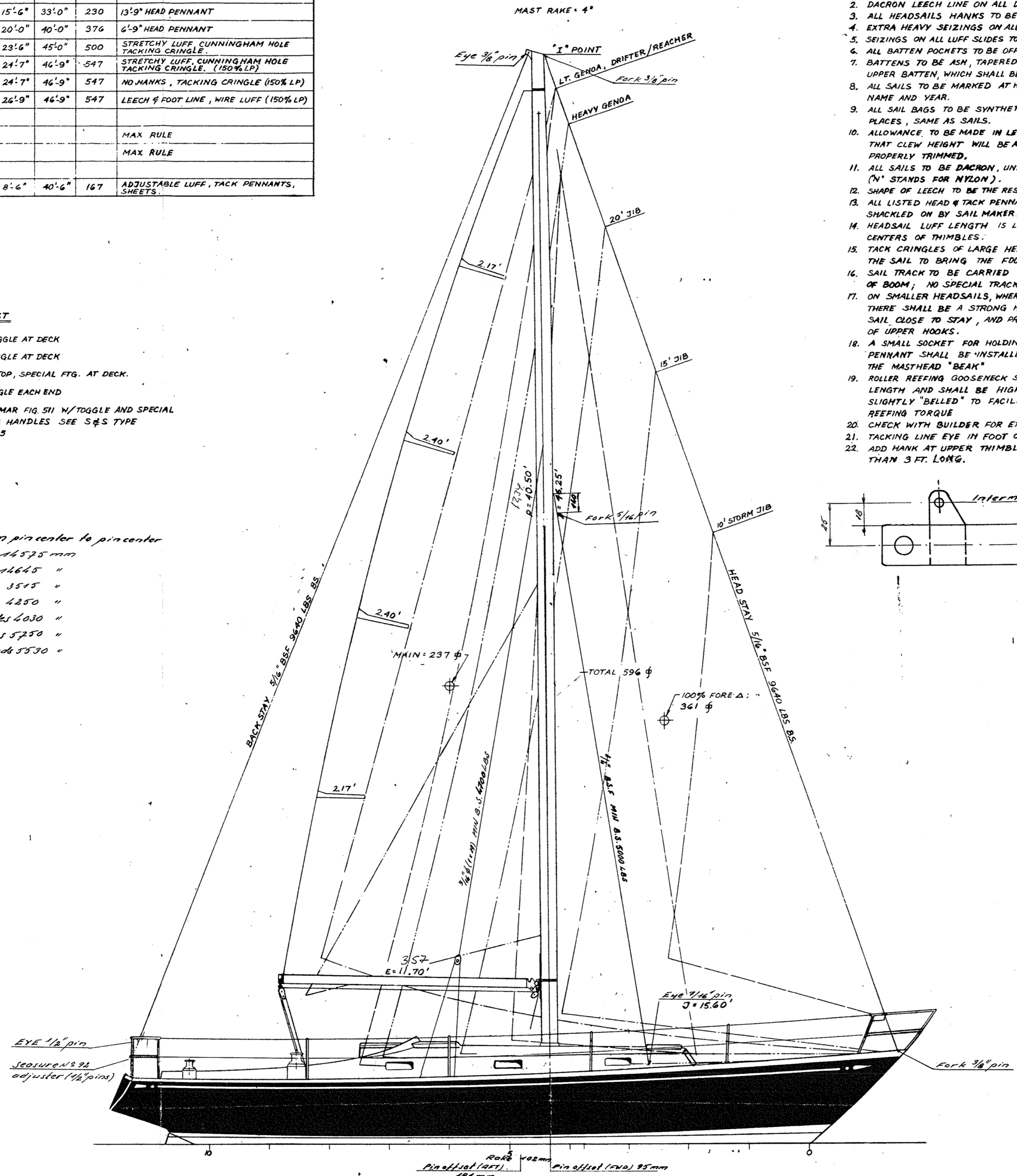
**TURNBUCKLE LIST**

TOP SHROUD: NONE - TOGGLE AT DECK  
 LWR SHROUD: NONE - TOGGLE AT DECK  
 MID STAY: TOGGLE AT TOP, SPECIAL FTG. AT DECK.  
 HEAD STAY: NONE - TOGGLE EACH END  
 BACK STAY: ONE (1) LEWMAR FIG 511 W/TOGGLE AND SPECIAL ADJUSTING HANDLES SEE S&S TYPE PLAN N° 25

All measurements from pin center to pin center  
 Length of headstay 14575 mm  
 " " backstay 14645 "  
 " " capshrouds 3545 "  
 " " upper spans 4250 "  
 " " intermediates 4030 "  
 " " main spans 5750 "  
 " " lower shrouds 5330 "

**GENERAL NOTES**

- WEIGHT OF MATERIAL IS GIVEN IN OUNCES PER YARD, U.S. STD. WIDTH OF 28 1/2".
- DACRON LEECH LINE ON ALL DACRON SAILS.
- ALL HEADSAILS HANKS TO BE SIDE PULL TYPE.
- EXTRA HEAVY SEIZINGS ON ALL SLIDES AND HANKS.
- SEIZINGS ON ALL LUFF SLIDES TO BE HIDE COVERED
- ALL BATTEN POCKETS TO BE OFFSET TYPE, WITH LIGHT TIES.
- BATTENS TO BE ASH, TAPERED AND VARNISHED, EXCEPT FOR UPPER BATTEN, WHICH SHALL BE FIBERGLASS, MAX. FLEX. & TAPERED
- ALL SAILS TO BE MARKED AT HEAD WITH SAIL NAME, BOAT NAME AND YEAR.
- ALL SAIL BAGS TO BE SYNTHETIC AND TO BE MARKED IN THREE PLACES, SAME AS SAILS.
- ALLOWANCE TO BE MADE IN LEECH DIMENSIONS OF GENOAS SO THAT CLEW HEIGHT WILL BE AS INDICATED WHEN SAIL IS PROPERLY TRIMMED.
- ALL SAILS TO BE DACRON, UNLESS OTHERWISE NOTED ("N" STANDS FOR NYLON).
- SHAPE OF LEECH TO BE THE RESPONSIBILITY OF THE SAIL MAKER.
- ALL LISTED HEAD & TACK PENNANTS TO BE FURNISHED AND SHACKLED ON BY SAIL MAKER
- HEADSAIL LUFF LENGTH IS LENGTH OF LUFF WIRE BETWEEN CENTERS OF THIMBLES.
- TACK CRINGLES OF LARGE HEADSAILS TO BE MADE WITHIN THE SAIL TO BRING THE FOOT AS LOW AS POSSIBLE.
- SAIL TRACK TO BE CARRIED DOWN TO LOWEST POSITION OF BOOM; NO SPECIAL TRACK STOP TO BE INSTALLED
- ON SMALLER HEADSAILS, WHERE TACK PENNANTS ARE SPECIFIED, THERE SHALL BE A STRONG HOOK AT TACK OF SAIL, TO HOLD SAIL CLOSE TO STAY, AND PREVENT PROGRESSIVE FAILURE OF UPPER HOOKS.
- A SMALL SOCKET FOR HOLDING A BALANCED RACING WIND PENNANT SHALL BE INSTALLED NEAR THE AFTER END OF THE MASTHEAD "BEAK"
- ROLLER REEFING GOOSENECK SLIDE, SHALL BE DOUBLE NORMAL LENGTH AND SHALL BE HIGHLY POLISHED INSIDE WITH ENDS SLIGHTLY "BELLED" TO FACILITATE OPERATION UNDER REEFING TORQUE
- CHECK WITH BUILDER FOR EXACT ROLLER REEFING TACK OFFSET.
- TACKING LINE EYE IN FOOT OF ALL GENOAS
- ADD HANK AT UPPER THIMBLE OF HEAD PENNANTS MORE THAN 3 FT. LONG.



LOA 36'-6 1/4"  
 DWL 27'-4"  
 BEAM MAX 10'-10"  
 DRAUGHT 6'-1 1/2"

Blk. N° 0-81-082  
 DESIGN N° 2035  
 SAIL PLAN  
 "SWAN 37"  
 ONE TON CUP YACHT  
 SCALE: 3/8" ~ 1'-0"  
 SPARKMAN & STEPHENS, INC.  
 79 MADISON AVE., NEW YORK, NY, 10016  
 DEC 22, 1969  
 DWG. N° 2035-18 ALT. 0